



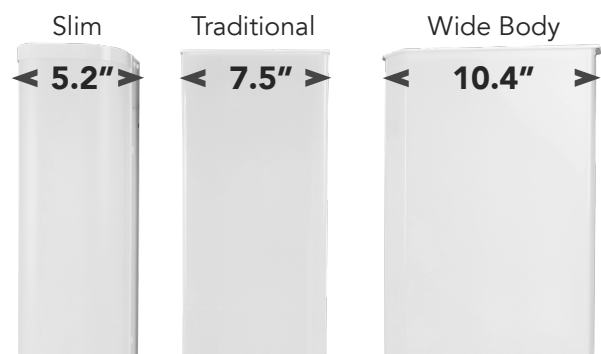
HELIOS SERIES  
**WIDE BODY WRAP**





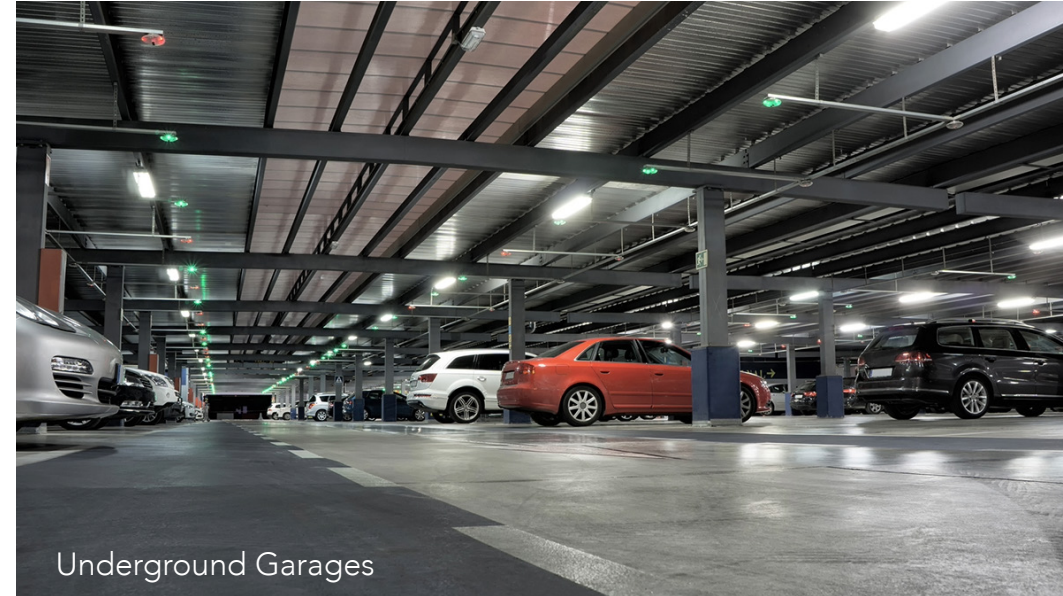
# THE **WIDEST** WRAP AROUND!

The Helios Series Wide Body LED Wraparound fixture is designed to provide the widest distribution of light across a space while easily covering up existing blemishes on the ceiling left behind by the older fixtures they're replacing.

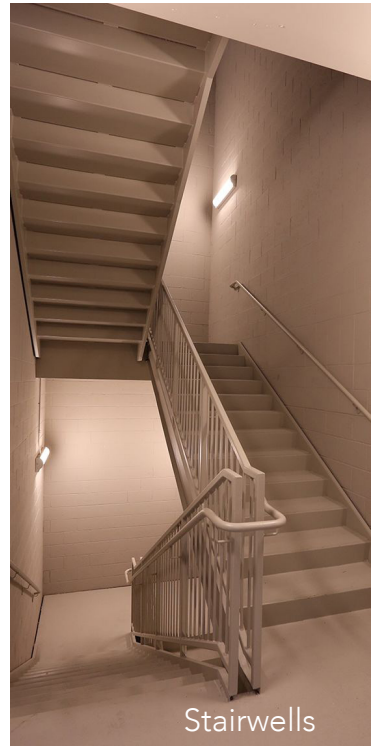


## A WRAP FOR EVERY PROJECT

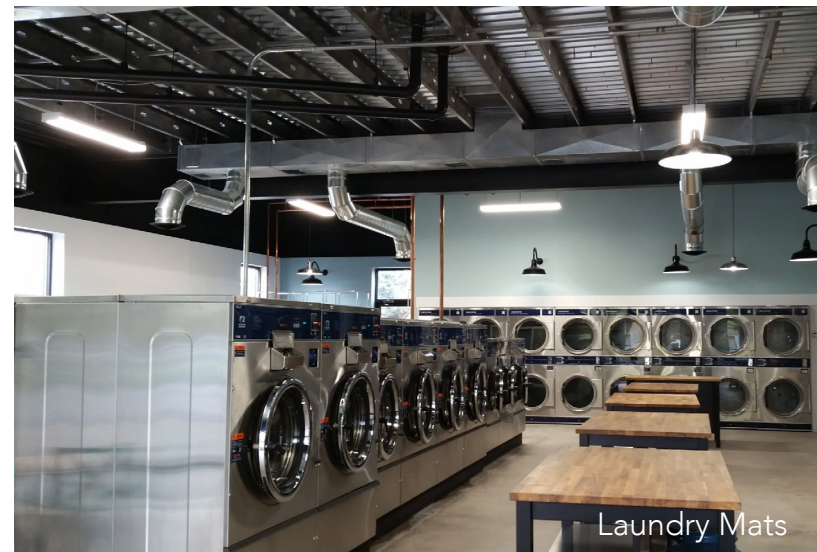
This Wide Body Wrap completes our lineup of wraparound fixtures: we now offer a width to suit any application.



Underground Garages



Stairwells



Laundry Mats



School Corridors

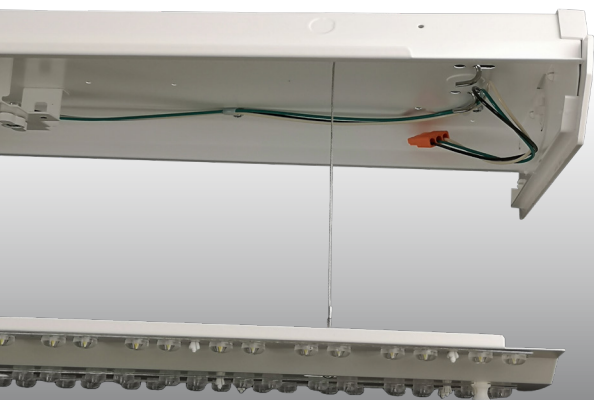
"Wraparounds" get their name from the lens wrapping around the edge of the fixture, providing uninterrupted light that wraps around the ceiling.

The Helios Wide Body Wraparound pays homage to the original design intent of this luminaire, ensuring uniform illumination with minimal glare in spaces with low ceilings such as underground parking garages, laundry mats, stairwells, school corridors, and apartment hallways.

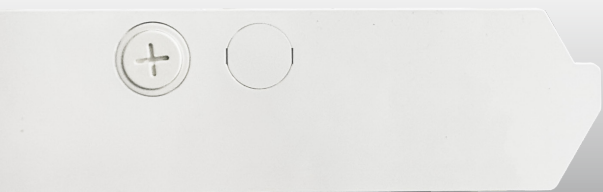




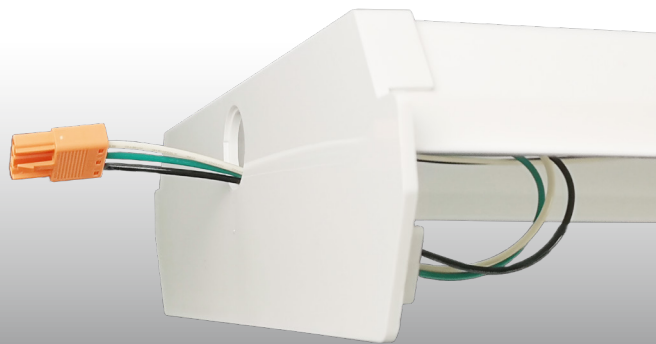
Details matter: Easytabs securing the light engine can be turned for fumble-free access to the wiring compartment.



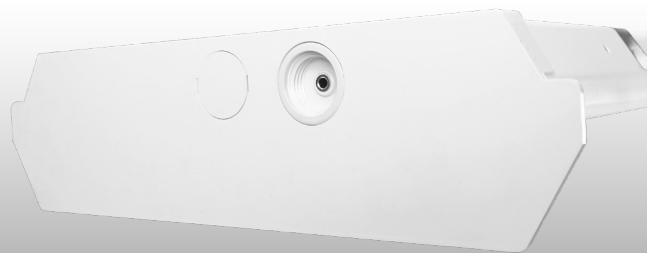
Retention cable holds the light engine in place, enabling quick and easy connections. No need for a second pair of hands!



Premium friction-fit re-installable  $\frac{3}{4}$ " knockouts, ready to accommodate your connections.



Dual-sided quickconnects for tandem row-mount installations, limited only to the ampacity of your circuit.



End mount 3.5mm jack socket built-in, making it future-proof ready for wireless sensors used in Bluetooth® Networked Lighting Control (NLC) systems.



Programmable Behind-the-Lens Microwave Sensor model available (Order# R38022).



WHAT'S PRIME?



The **Prime** Collection is our core offering designed for projects that require top-tier features including high lumen packages, premium LED chips and materials, integrated emergency batteries and sensors, and thoughtful features that make your installation easier.

# THERE'S MORE THAN ONE REASON **TO GO WIDE**

# Quick Specs



## Wide Body Wraparound Fixtures

Order #	Model #	Watts	Voltage	Lumens*	CCT	Sensor
R38021	RENO-WHWR4-DV-MW-MCCT	30/40/50/60W	120-347V	4,200/5,640/ 7,100/8,580 lm	35/40/5000K	None
R38022	RENO-WHWR4-DV-MW-MCCT-MS	30/40/50/60W	120-347V	4,200/5,640/ 7,100/8,580 lm	35/40/5000K	Integrated

\*Lumens shown based on 4000K CCT setting.

## Accessories

Order #	Model #	Description
R74002	RENO-SENSOR-PIR-H-EX	PIR MOTION SENSOR, FOR EXTERNAL MOUNTING (ABOVE 13FT)
R73002	RENO-REMOTE-H**	PREMIUM REMOTE CONTROL WITH SCREEN
R73005	RENO-REMOTE-H-ECO**	REMOTE CONTROL

\*\* One Remote Control is required if using the RENO-SENSOR-PIR-H-EX (R74002) or the R38022 Integrated Sensor model to program all fixtures on a single site.



We are RENO, a leading Canadian Manufacturer of energy efficient lighting that is committed to being Always On™.

### 10 YEARS

Serving and supporting the Canadian lighting industry.

### 50,000+ SF

Centrally located warehouse shipping coast-to-coast.

### SAME-DAY SHIP

We strive to ship out your customer’s order on the same day the order is placed.

### EXPRESS PICKUP

Order and pickup within an hour at our conveniently located warehouse just north of Toronto.

### PROJECT EXPERTS

In-house team of retrofit project experts to support your client’s lighting audit, ROI analysis and rebate application.

### ORIGINAL DESIGN

Our overseas production base researches, engineers, and prototypes new lighting products for Design-Build applications.



Always On.™



Always On.™

renolighting.com  
905-604-4666

9133 Leslie Street, Unit 120  
Richmond Hill, ON L4C 4N1