

Date		Project	
Type		Part Number	

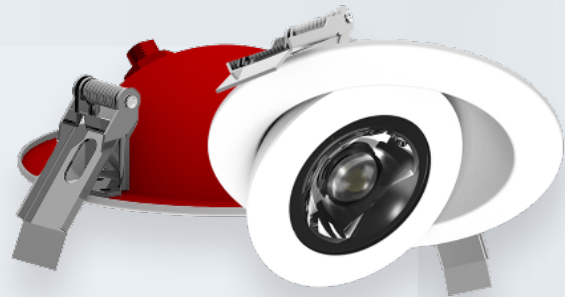


ALL-IN-ONE PERFORMANCE LIGHTING

# MARQUEE Series

## Fire Rated Floating Gimbal

The Marquee Series Fire Rated Floating Gimbal is designed to provide exceptional illumination. These downlights provide two hours of protection in the event of a fire and are perfect solution for installations with low ceiling clearance. High-quality mounting spring, quick connectors, and included junction box. The premium aluminum body of this LED round gimbal ensures superior durability and aesthetics compared to plastic options.



**2 HOUR FIRE RATING**  
 Tested to comply with UL 2683,  
 ASTM E119 & CAN UL C 55101



## PRODUCT FEATURES

- JA8 compliant
- FT6-Rated Cable
- 2-Hour fire rating providing a reinforced and heat resistant steel casing
- IC-rated and Air-Tight ready and may be in direct contact with insulation
- Compatible with Soffit installations and can be installed in shallow plenum spaces
- Flicker-free 120V forward-phase triac dimming down to 5%
- Operating temperature: -4°F to +104°F (-20°C to +40°C)
- Rated Lifespan: L70 ~50,000 hrs
- 5 year warranty

## KEY SPECIFICATIONS

<b>Voltage</b>	120V
<b>Sizes</b>	4"
<b>Wattage</b>	9W
<b>Lumens</b>	900 lm
<b>CCT</b>	27/30/35/40/5000K
<b>Power Factor</b>	>0.9
<b>CRI</b>	>90
<b>Beam Angle</b>	38°
<b>Dimming</b>	120V forward-phase TRIAC Dimming
<b>Mounting</b>	Recessed
<b>Applications</b>	Commercial, Residential, Retail Facilities



EMERGENCY  
 BACKUP READY

## SPECIFICATIONS - 4" FIRE RATED FLOATING GIMBAL

Order#	Model	Wattage	Voltage	Lumens	Efficacy	CCT	Shape/ Finish
R36306	RENO-LED-4-S9W-FG-5CCTWH-FR	9W	120V	900 lm	100 lm/W	2700/3000 3500/ 4000/5000K	Round/ White

## ACCESSORIES – MOUNTING



R39108  
RENO-MP4  
4" Mounting Plate without clip

Order#	Model	Description
R39108	RENO-MP4	4" Mounting Plate without clip (Opening 108mm)

## ACCESSORIES – EMERGENCY LED DRIVERS

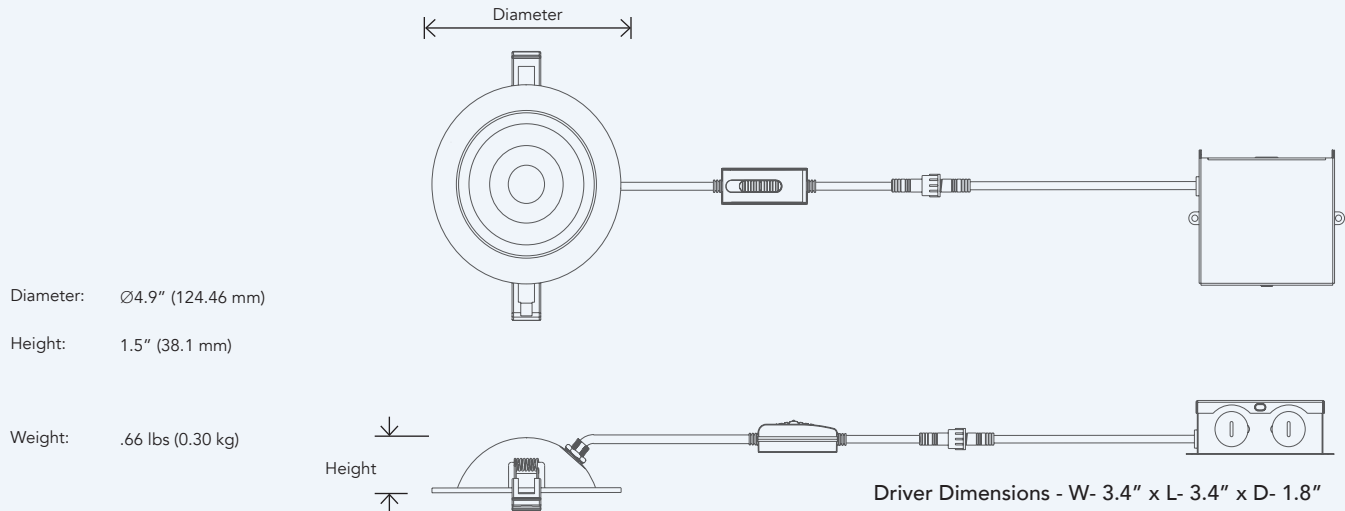


R83000  
RENO-EM-H08  
Emergency LED Driver  
(100-347V AC, 50-60Hz, 12W)

Order#	Model	Description
R83000	RENO-EM-H08	Emergency LED Driver (100-347V AC, 50-60Hz, 12W)

## DIMENSIONS

### ROUND GIMBAL



\*NOTE: Width in ceiling needed for the driver to fit is 3" Cut hole size 4-1/4" (108mm)