

## INSTRUCTIONS FOR THE FOLLOWING FIXTURES

Order	Model
R34401	RENO-CIRSUS-24-DV-MW-MCCT-WH
R34402	RENO-CIRSUS-24-DV-MW-MCCT-BK
R34403	RENO-CIRSUS-36-DV-MW-MCCT-WH

Order	Model
R34404	RENO-CIRSUS-36-DV-MW-MCCT-BK
R34405	RENO-CIRSUS-48-DV-MW-MCCT-WH
R34406	RENO-CIRSUS-48-DV-MW-MCCT-BK

Read Instruction manual carefully to ensure proper installation.  
Please keep this instruction manual for future using!



**WARNING**  
To avoid the risk of fire, or electric shock this product should be installed, inspected, and maintained by a qualified electrician only. Installation should be completely by an individual familiar with the construction and operation of the luminaire. Installation of luminaire must be in accordance with nation and local building and electrical codes.

### Safety Warning:

To avoid electric shock:  
Be certain electrical power is OFF before and during installation and maintenance.  
Luminaire must be supplied by a wiring system with an equipment grounding conductor.  
To avoid burning hands:  
Make sure lens and housing are cool when performing maintenance.  
To avoid product degradation:  
Make sure the wire supply voltage is the same as the luminaire supply  
Use proper supply wiring as specified on the luminaire nameplate.  
Avoid use in environments containing sulfur, chlorine, or other halides, methyl acetate or ethyl acetate, cyanoacrylates, glycol ethers, formaldehyde or butadiene.

### Notes:

Instructions do not cover all details and all possible product configurations. Do not restrict luminaire ventilation.  
Ensure LED luminaire is not covered with material that will prevent convection or conduction cooling.  
Ensure LED luminaire has the correct polarity before installation  
Avoid exposing wiring to metal edges and sharp objects.

### Maintenance:

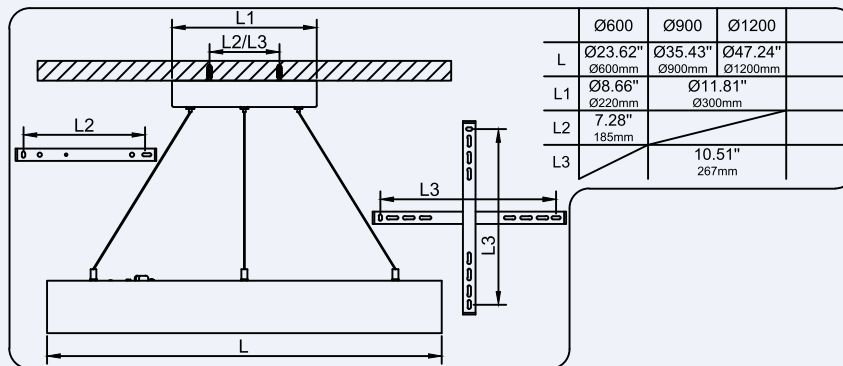
Perform visual, electrical, and mechanical inspections on a regular basis.  
The environment and frequency of use should determine the inspection schedule; however, it is recommended that checks be made at least once a year.

Electrically: check to ensure that all connections are tight.

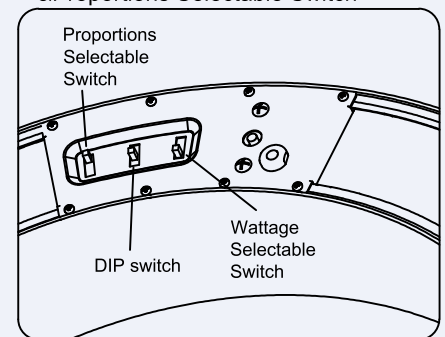
Mechanically: check that all parts are properly assembled.

## INSTALLATION

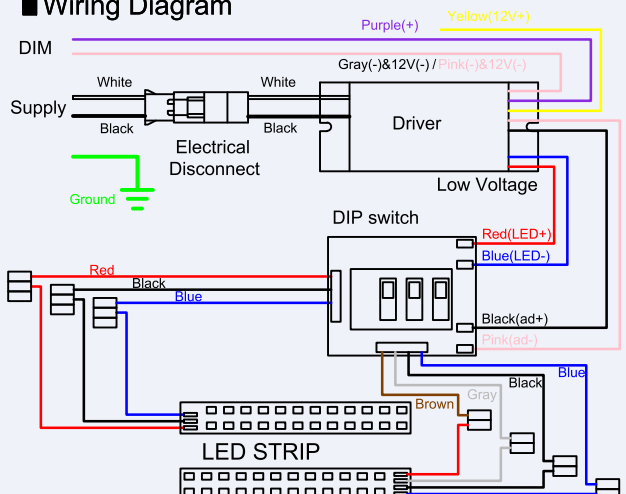
### ■ Installation Dimension (suspended)



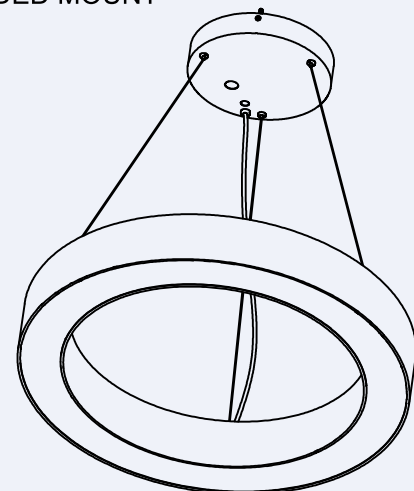
### ■ Dip switch for CCT & Wattage Selectable Switch & Proportions Selectable Switch



### ■ Wiring Diagram

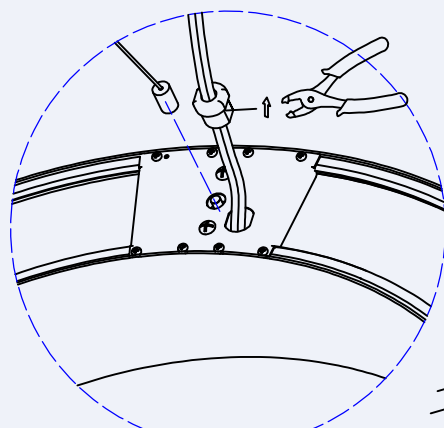
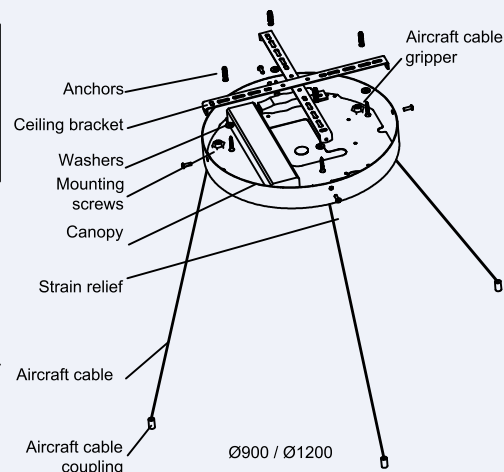
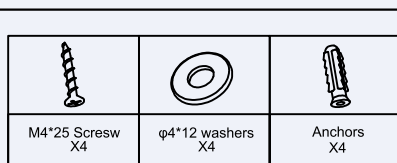
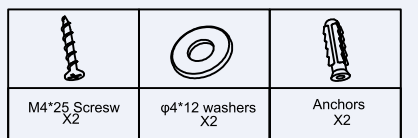
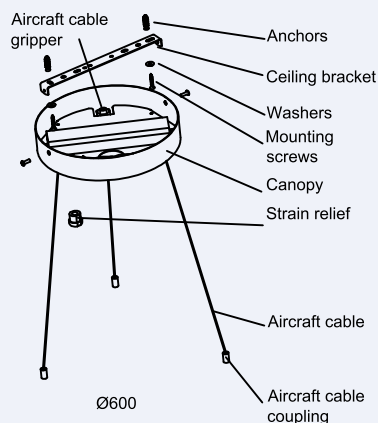


### ■ SUSPENDED MOUNT

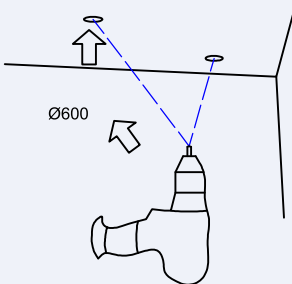


## INSTALLATION

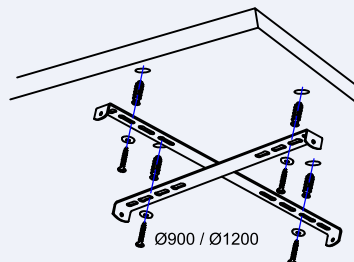
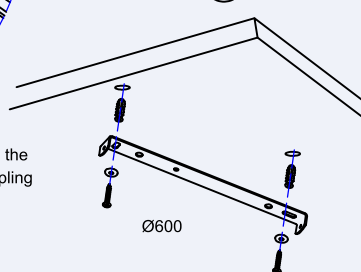
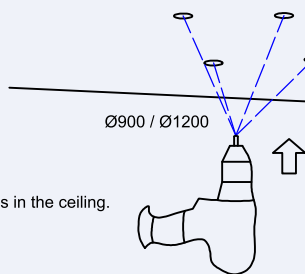
### ■ SUSPENDED MOUNT



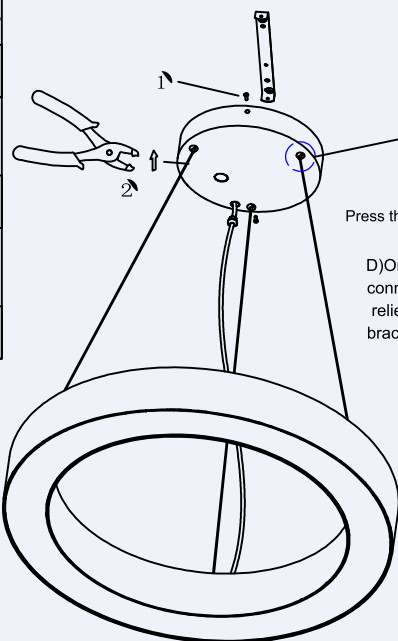
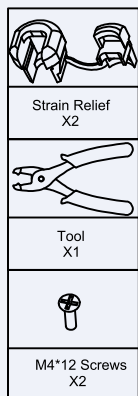
A) Secure the cable with a strain relief after confirming the proper cable length, then fasten the aircraft cable coupling onto the screws of the fixture.



B) Drill holes in the ceiling.



C) Install the ceiling bracket and connect the ground wire.



Press the cable gripper to adjust the suspension cable length.

D) On the canopy, make the wiring connections, then secure the strain relief, and finally fasten the ceiling bracket to the canopy with screws.

