

Date		Project	
Type		Part Number	

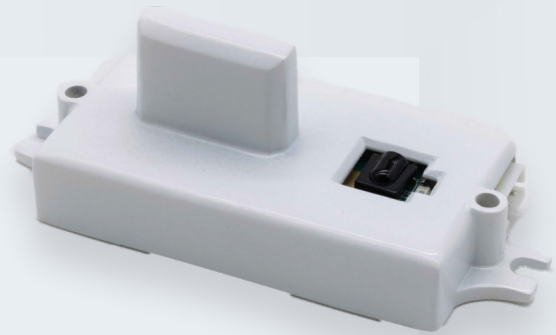


ALL-IN-ONE PERFORMANCE LIGHTING

INTEGRATED Sensors

SECTOR DIPOLE ANTENNA MICROWAVE SENSOR

The Sector Dipole Antenna Microwave Sensor delivers wide-area motion detection with pinpoint accuracy, even through walls and low-visibility conditions. Ideal for smart lighting, security, and automation systems — because sensing should be smart, seamless, and invisible.



PRODUCT FEATURES

- In accordance with CE RED
- IP20 Damp Location Rated
- 5.85GHz Frequency which avoids interference with most WiFi signals
- 3-pin Quick Connection
- Remote needed for sensor configuration
- Operation temperature: -31°F to 140°F (-35°C to 60°C)
- 5 year warranty

KEY SPECIFICATIONS

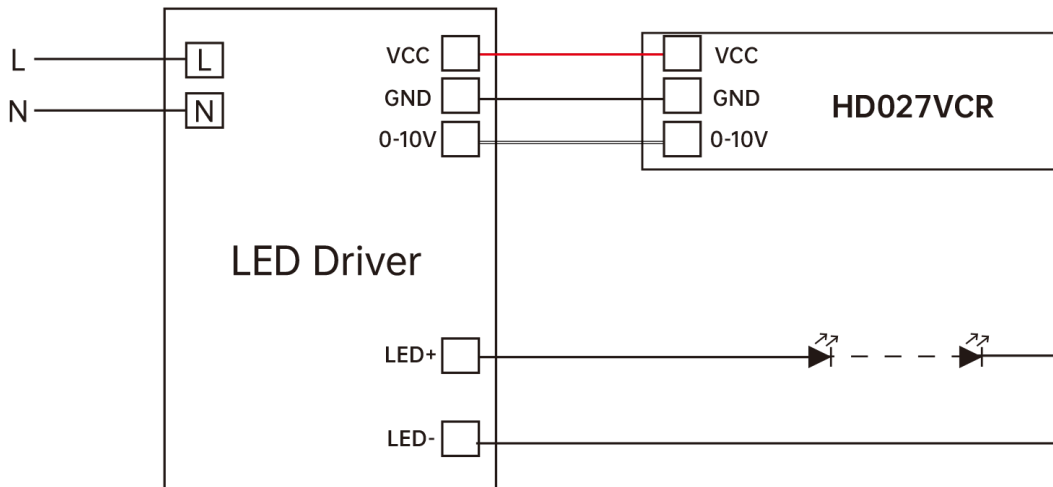
Input Voltage	12VDC
Installation Height	Up to 6M (20ft)
Detection Radius	3M (10ft)
Frequency	5.8GHz±75MHz
Output	DIM, 0-10V
Installation	3-pin Connection
Applications	Commercial, Warehouse, Retail Facilities



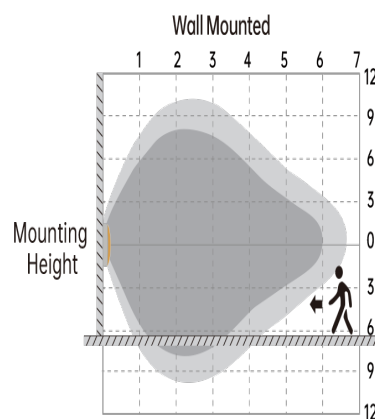
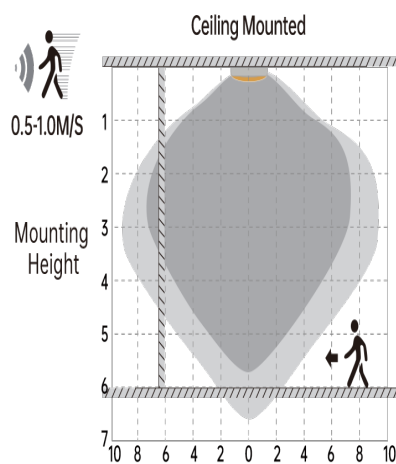
SPECIFICATIONS

Model	Installation Height	Detection Radius	Input Voltage
RENO-HD027VCR	Up to 6M (20ft)	3M (10ft)	12VDC

WIRING DIAGRAM



DETECTION COVERAGE



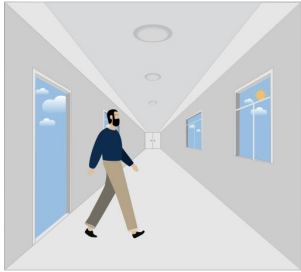
Highest mounting height is 6m

This figure indicates the maximum distance at the highest mounting height with 100% sensitivity.

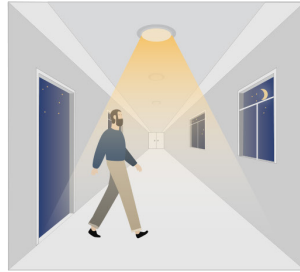
Well Detected Area Possibly Detected Area

PERFORMANCE

1. Automatically ON/OFF function



With sufficient daylight, even when motion detected, light remains OFF.



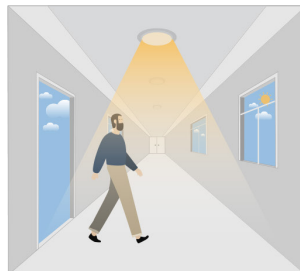
With insufficient daylight, the sensor turns light ON when motion gets detected.



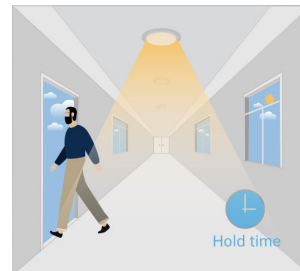
The sensor turns OFF light automatically after the holdtime when there's no motion detected.

2. Daylight Disable

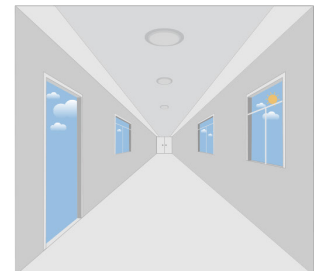
When daylight threshold is preset as "disable", the sensor turns light ON when motion gets detected, and OFF after hold-time.



The sensor turns light ON when motion gets detected.

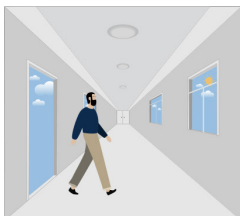


The sensor keeps light ON for holdtime period after motion leaves.

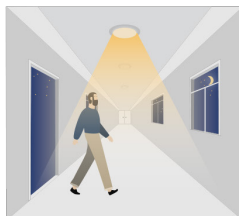


The sensor turns OFF light automatically after the holdtime.

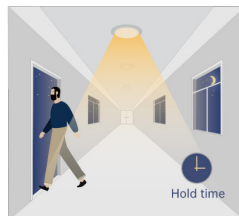
3. Corridor Function, Bi-level Dimmable



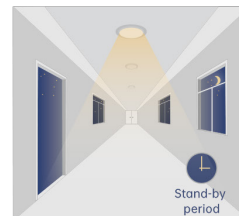
With sufficient daylight, the sensor keeps light OFF even motion gets detected.



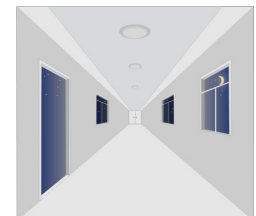
With insufficient daylight, the sensor turns light ON when motion gets detected.



After there's no motion detected, the sensor keeps light ON 100% for holdtime.



After holdtime, sensor dims light to standby dimming level for standby period.



The sensor turns OFF light automatically after the standby period when there's no motion detected.

ACCESSORIES - REMOTES



R73002
RENO-REMOTE-H
Remote Control for Standalone
Sensors (With Screen)

R73005
RENO-REMOTE-H-ECO
Remote Control for Standalone
sensors (Without Screen)

Order#	Model	Description
R73002	RENO-REMOTE-H	Remote Control for Standalone Sensors (With Screen) Note: Only 1 needed per project.
R73005	RENO-REMOTE-H-ECO	Remote Control for Standalone sensors (Without Screen) Note: Only 1 needed per project.

DIMENSIONS

