

Date		Project	
Type		Part Number	

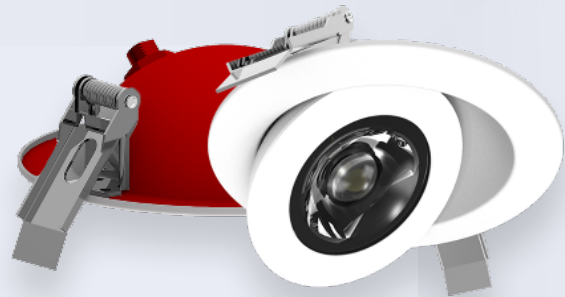


ALL-IN-ONE PERFORMANCE LIGHTING

MARQUEE Series

Fire Rated Floating Gimbal

The Marquee Series Fire Rated Floating Gimbal is designed to provide exceptional illumination. These downlights provide two hours of protection in the event of a fire and are perfect solution for installations with low ceiling clearance. High-quality mounting spring, quick connectors, and included junction box. The premium aluminum body of this LED round gimbal ensures superior durability and aesthetics compared to plastic options.



2 HOUR FIRE RATING
 Tested to comply with UL 263,
 ASTM E119 & CAN ULC 5101



PRODUCT FEATURES

- JA8 compliant
- FT4-Rated Cable
- 2-Hour fire rating providing a reinforced and heat resistant steel casing
- IC-rated and Air-Tight ready and may be in direct contact with insulation
- Compatible with Soffit installations and can be installed in shallow plenum spaces
- Flicker-free 120V forward-phase triac dimming down to 5%
- Operating temperature: -4°F to +104°F (-20°C to +40°C)
- Rated Lifespan: L70 ~50,000 hrs
- 5 year warranty

KEY SPECIFICATIONS

Voltage	120V
Sizes	4"
Wattage	9W
Lumens	900 lm
CCT	27/30/35/40/5000K
Power Factor	>0.9
CRI	>90
Beam Angle	38°
Dimming	120V forward-phase TRIAC Dimming
Mounting	Recessed
Applications	Commercial, Residential, Retail Facilities



EMERGENCY
 BACKUP READY

SPECIFICATIONS - 4" FIRE RATED FLOATING GIMBAL

Order#	Model	Wattage	Voltage	Lumens	Efficacy	CCT	Shape/ Finish
R36306	RENO-LED-4-S9W-FG-5CCTWH-FR	9W	120V	900 lm	100 lm/W	2700/3000 3500/ 4000/5000K	Round/ White

ACCESSORIES – MOUNTING



R39108
RENO-MP4
4" Mounting Plate without clip

Order#	Model	Description
R39108	RENO-MP4	4" Mounting Plate without clip (Opening 108mm)

ACCESSORIES – EMERGENCY LED DRIVERS



R83000
RENO-EM-H08
Emergency LED Driver
(100-347V AC, 50-60Hz, 12W)

Order#	Model	Description
R83000	RENO-EM-H08	Emergency LED Driver (100-347V AC, 50-60Hz, 12W)

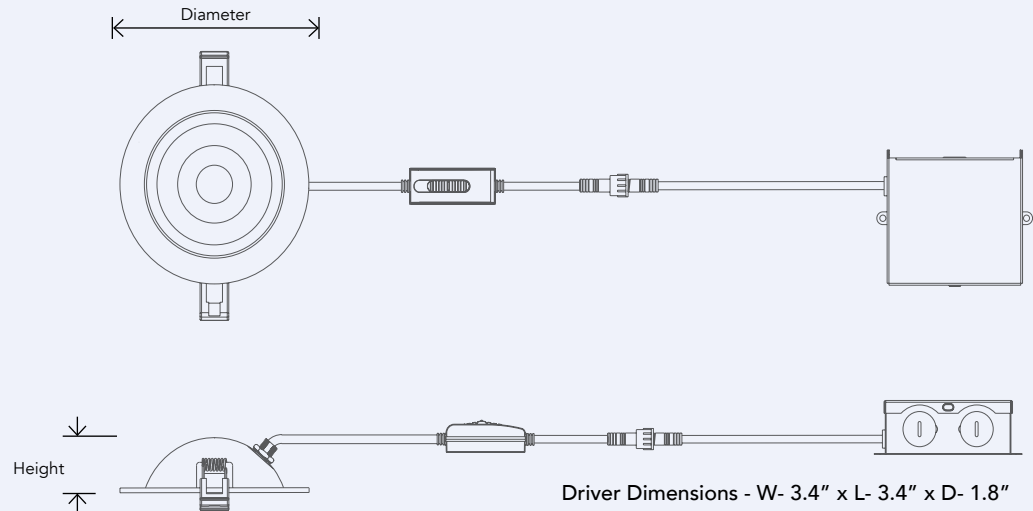
DIMENSIONS

ROUND GIMBAL

Diameter: Ø4.9" (124.46 mm)

Height: 1.5" (38.1 mm)

Weight: .66 lbs (0.30 kg)



*NOTE: Width in ceiling needed for the driver to fit is 3" Cut hole size 4-1/4" (108mm)