

Date		Project	
Type		Part Number	



ALL-IN-ONE PERFORMANCE LIGHTING

BRILLIANCE Series

Slim Downlight with Baffle Trim

The Brilliance Series 12W Slim Round Downlight with Regress Baffle combines a sleek design with a small aperture without any compromise to the light output. With up to 800 lumens and a CRI of 90, this small downlight provides an outstanding performance that will suit both residential and commercial applications.



PRODUCT FEATURES

- JA8 compliant
- Energystar Certified
- IC-Rated and Air-Tight ready and may be in direct contact with insulation
- May be installed in drywall or suspended ceilings
- Edge-lit technology, no glare or dark spots, instant-on
- Regressed lens and Baffle Trim Design
- Flicker-free 120V forward-phase triac dimming down to 5%
- 347V driver available
- Operating temperature: -4°F to +104°F (-20°C to +40°C)
- Rated Lifespan: L70 ~50,000 hrs
- 5 year warranty

KEY SPECIFICATIONS

Voltage	120V
Wattage	12W
Size	4"
Power Factor	>0.9
CCT	27/30/35/40/5000K
CRI	>90
Lumens	Up to 980 lm
Beam Angle	120°
Dimming	120V forward-phase TRIAC Dimming
Mounting	Recessed
Applications	Commercial, Residential, Retail Facilities

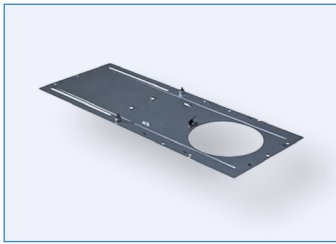


EMERGENCY
BACKUP READY

SPECIFICATIONS – 12W

Order#	Model	Wattage	Voltage	Lumens	Efficacy	CCT	Finish
R36015	RENO-4-S12W-5CCT-BF-WH	12W	120V	811 lm	68 lm/W	2700K	White
				905 lm	75 lm/W	3000K	
				980 lm	82 lm/W	3500K	
				972 lm	81 lm/W	4000K	
				879 lm	73 lm/W	5000K	
R36016	RENO-4-S12W-5CCT-BF-BK	12W	120V	811 lm	68 lm/W	2700K	Black
				905 lm	75 lm/W	3000K	
				980 lm	82 lm/W	3500K	
				972 lm	81 lm/W	4000K	
				879 lm	73 lm/W	5000K	

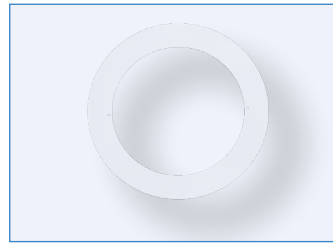
ACCESSORIES – MOUNTING



R39108
RENO-MP4
4" Mounting Plate without Clip



R39105
RENO-HBL012-347V-D
AC277-347V driver for 4"
potlights



R39101
RENO-4-GR
4" Goof Ring

Order#	Model	Description
R39108	RENO-MP4	4" Mounting Plate without Clip
R39105	RENO-HBL012-347V-D	AC277-347V driver for 4" Potlights
R39101	RENO-4-GR	4" Goof Ring

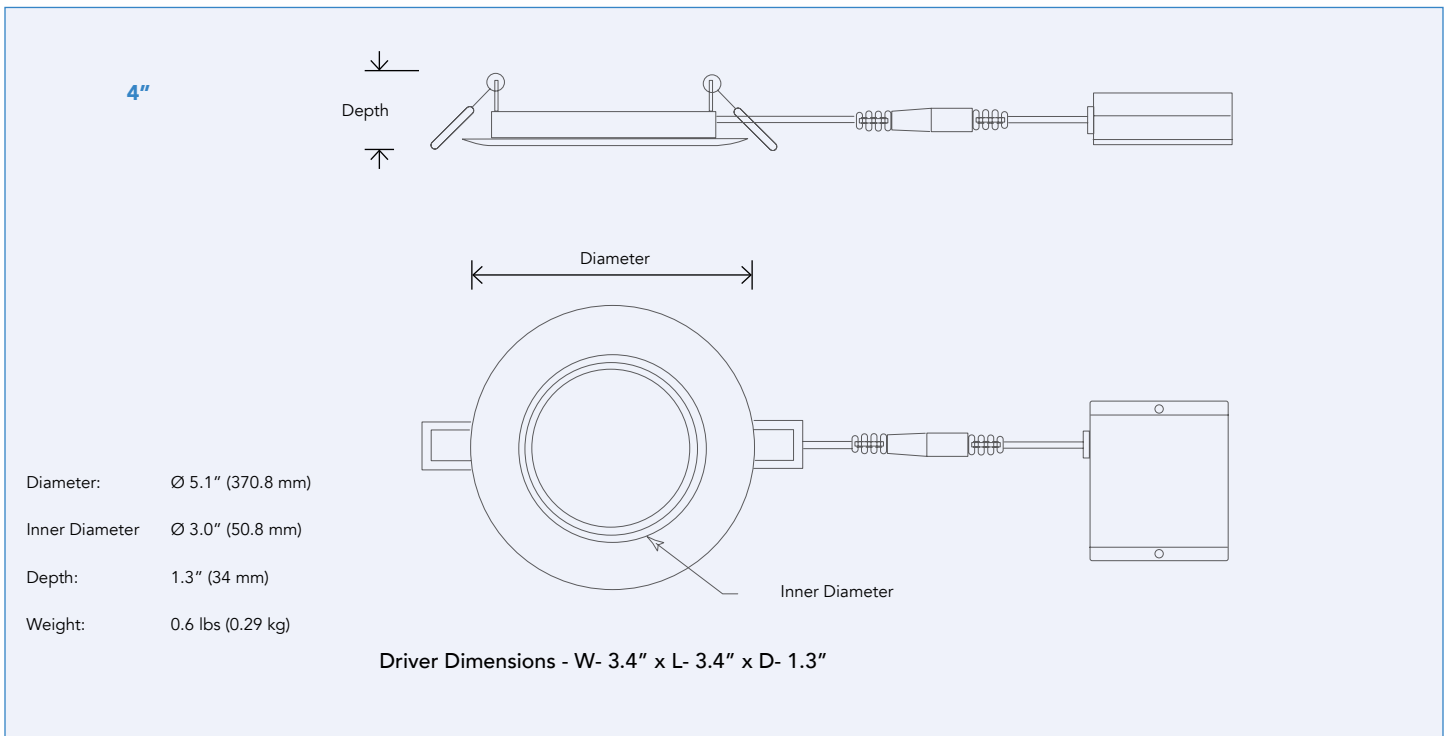
ACCESSORIES – EMERGENCY LED DRIVERS



R83000
RENO-EM-H08
Emergency LED Driver
(100-347V AC, 50-60Hz, 12W)

Order#	Model	Description
R83000	RENO-EM-H08	Emergency LED Driver (100-347V AC, 50-60Hz, 12W)

DIMENSIONS



*NOTE: Width in ceiling needed for the driver to fit is 3" Cut hole size 4-1/4" (108mm)