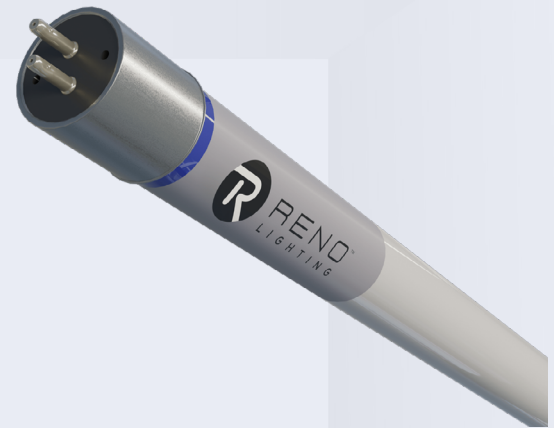


Date		Project	
Type		Part Number	

TYPE B T5

Type B T5 Tubes

Upgrade your fluorescent lighting to the Type B T5 LED Lamp, designed for direct-wire operation without the need for a ballast. By bypassing the ballast, this LED tube offers higher efficiency, reduced maintenance costs, and a longer lifespan of up to 50,000 hours. Ideal for offices, schools, hospitals, warehouses, and commercial spaces, it delivers bright, flicker-free illumination with lower energy consumption — helping you save on electricity while enjoying superior lighting performance.



PRODUCT FEATURES

- NSF Listed: NSF/ANSI Standard 2 - Food Equipment
- Built-in safety switch prevents electrical shock during installation
- Operates directly on 120-277V line voltage
- Direct replacement for T5/HO Fluorescent Lamp
- Suitable for use in dry and damp locations
- Operating temperature: -4°F to +113°F (-20°C to +45°C)
- Rated Lifetime L70(hrs): >50,000
- 10 year limited warranty

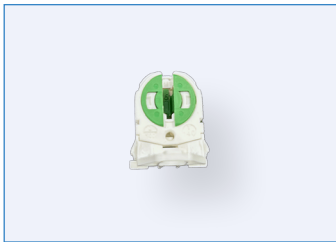
KEY SPECIFICATIONS

Lamp Base	G5
Size	2.0 - 3.0 ft
Wattage	9-12W
Voltage	120-277V
CCT	4000K
Lumens	Up to 1,600 lm
CRI	83+
Beam Angle	330°
Lifespan	50,000 hrs
Dimming	No

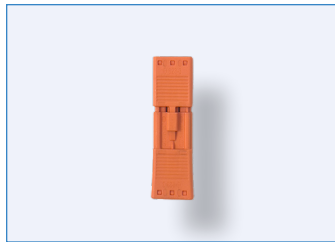
SPECIFICATIONS

Order#	Model	Size	Wattage	Voltage	CCT	Lumens	CRI	Beam Angle
R42106	WLL-LEDT5BP9D/840	2.0 ft	9W	120-277V	4000K	1200 lm	>83	330°
R42107	WLL-LEDT5BP12D/840	3.0 ft	12W	120-277V	4000K	1600 lm	>83	330°

ACCESSORIES – MOUNTING



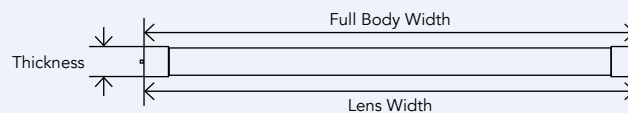
289/SN-15-PBT
Low profile rotary lock
T5 socket



RENO-DISCONNECT
Quick Disconnect

Order#	Model	Description
-	289/SN-15-PBT	Low profile rotary lock T5 socket
-	RENO-DISCONNECT	Quick Disconnect

DIMENSIONS



2 FT

Full Body Width: 21.6" (548.6 mm)
Lens Width: 17.6" (447 mm)
Thickness: 0.9" (22.9 mm)

Weight: n/a

3 FT

Full Body Width: 33.4" (848.4 mm)
Lens Width: 29.6" (751.8 mm)
Thickness: 0.9" (22.9 mm)

Weight: n/a